

ANYBODY HOME?

Each 12 1/2" block has four (4) 6 1/2" house patches:

MATERIALS NEEDED for one (1) House patch:

Background Fabric: Two (2) 3" squares

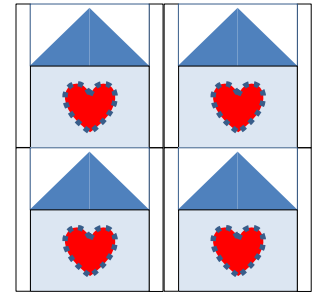
Roof Fabric: One (1) 3" x 5 1/2" rectangle

House: One (1) 4" x 5 1/2" rectangle

Background vertical border: Two (2) 1" x 6 1/2" rectangles

Heart: One (1) 3" square of heart fabric

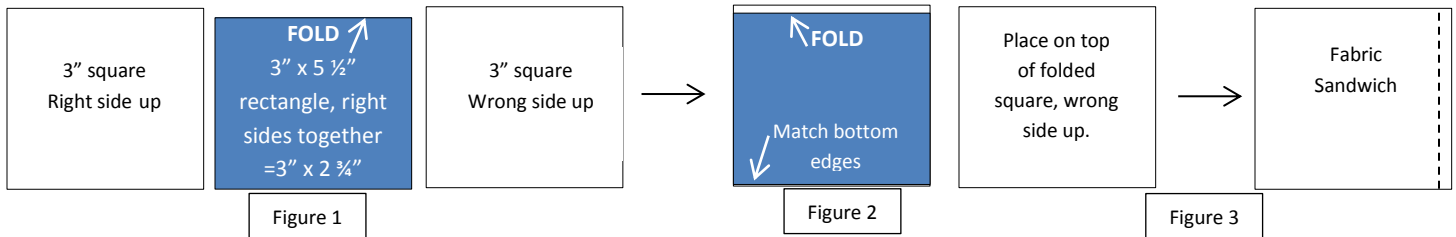
Fusible webbing (Steam-a-Seam 2, Heat and Bond Lite or similar): One (1) 3" square



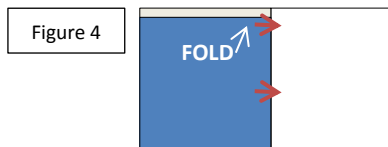
The roof is made using a "One seam Flying Geese block".

Begin by making a "fabric sandwich" by placing a 3" square, right side up, on the bottom of the sandwich.

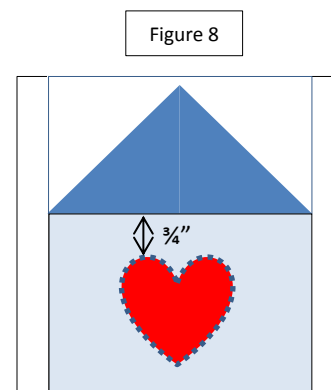
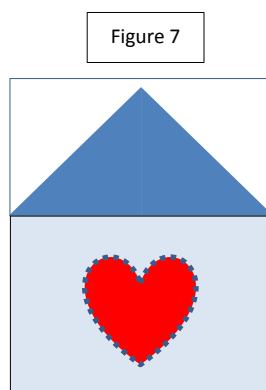
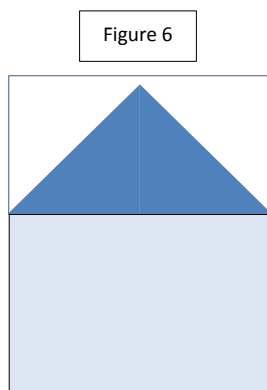
1. Fold the 3" x 5 1/2" rectangle in half, wrong sides together, fold at the top. (Fig 1)
2. Place the folded rectangle on top of the 3" square, matching the bottom edges. (There will be 1/4" of the 3" square showing at the top.) (Fig 2)
3. Place another 3" square on top of the folded 3" x 5 1/2" rectangle, wrong side up. (Fig 3)



4. Sew an accurate 1/4" seam along the right side of the sandwich. **Before you sew**, double check to make sure the fold is at the top of your sandwich and you are stitching along the **RIGHT** side. (Fig 3)
5. Open and press toward one of the background 3" squares. (Fig 4)



6. Open the 3 1/2" x 5" rectangle into a triangle, by pulling the top left corner down to the bottom right corner – the point will be at the top, matching corners and press open. You can see that it's important to have the extra 1/4" of background fabric at the top to give you a clean top point of the triangle. (Fig 5)
7. Add the 4" x 5 1/2" rectangle (house fabric) to the roof of the house with a 1/4" seam. (Fig 6)
8. Using the heart template, draw, with a pencil, the heart on the paper side of the fusible webbing. As per package instructions, fuse the webbing to the wrong side of the 3" heart square fabric. Cut out the heart on the pencil line and fuse to the center of the house (3/4" down from the seam where roof meets house). Using a zig zag or applique stitch to secure the heart to the house. (Fig 7)
9. Add a 1" x 6 1/2" rectangle to each vertical side of the block using a SCANT 1/4" seam. Trim block to 6 1/2" square. (Fig 8)



To make the "Anyone Home?" quilt: (Approx. 44" x 50")

You will need:

Nine (9) 12 ½" house blocks (=36 houses: Use scraps and vary the colors of the houses, hearts and roofs for variety.)

6 vertical sashing strips (2 ½" x 12 ½") to separate the houses

4 horizontal sashing strips (2 ½" x 40 ½")

Vertical Borders: 2 ½" x 44 ½"

Outer Border: Vertical: 3 ½" x 44 ½"; Horizontal: 3 ½" x 50 ½"

DIRECTIONS:

1. Assemble 3 rows with three (3) 12 ½" house blocks per row. *Note: Vary the colors of the houses, hearts and roofs for variety. This is a great block for a group project.*
2. Separate each house block with a 2 ½" vertical sashing strip.
3. Separate each row with a 2 ½" sashing strip.
4. Add a 2 ½" inner border using the same sashing fabric, to quilt top.
5. Hearts can be made from novelty prints creating an "I Spy" type quilt.
6. Add 3 ½" outer borders to finish quilt.

